



Fletcher Road, London, W4 5AS

£525,000

WHITMAN & CO.

SALES · LETTINGS · COMMERCIAL

- Two/three bedrooms
- 788 sq ft of accommodation
- Private front door

- Bright and spacious maisonette
- Sought after residential road
- Close to amenities

Tenure - Leasehold
 Length of lease - 944 Years remaining
 Ground Rent - £12 pa
 Service Charge - £0
 Local Authority - Ealing
 Council Tax - Band D

THE PROPERTY

This unique two/three-bedroom maisonette offers versatile living space within a rare standalone property.

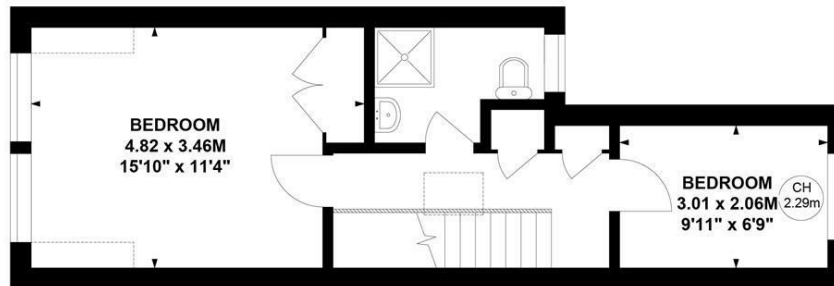
Accessed via a private front door, the home features a bright 13'10" reception room, a well-appointed fitted kitchen, a shower room, and two/three bedrooms. Spanning 778 sq ft, the property enjoys excellent natural light throughout and offers adaptable accommodation suited to a variety of lifestyles.

This maisonette is ideally positioned on a sought-after residential street, within close reach of excellent transport links and a wide array of local amenities.

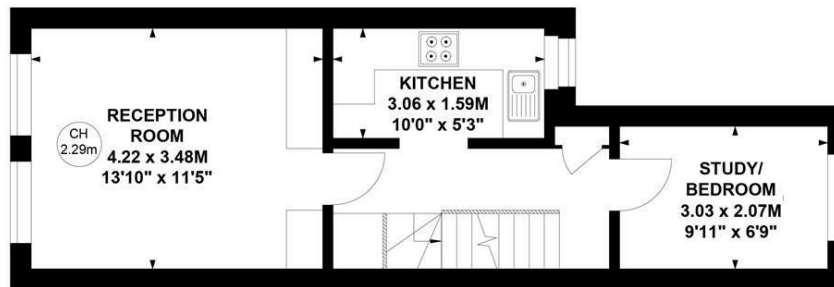
Fletcher Road, W4

Approximate Gross Internal Area
 72.24 sq m / 778 sq ft

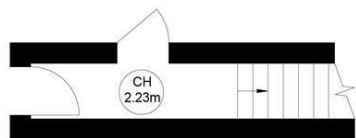
Key :
 CH - Ceiling Height



Second Floor



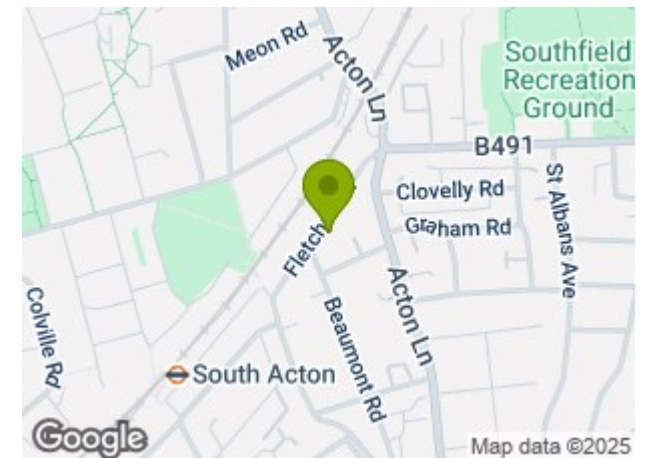
First Floor



Ground Floor

Not to scale, for guidance only and must not be relied upon as a statement of fact.
 All measurements and areas are approximate only

SITUATION



5-7 Turnham Green Terrace, Chiswick, London, W4 1RG

Tel 020 8747 8800

E-mail sales@whitmanandco.com

Website www.whitmanandco.com



MISREPRESENTATION ACT 1967

Whitman & Co. for themselves and for the vendors give notice that these particulars do not constitute any part of, an offer of contract. All statements contained in these particulars are made without responsibility on the part of Whitman & Co. or the vendor. None of the statements contained in these particulars is to be relied upon as statements or representations of facts. Any intending purchaser must satisfy himself by inspection or otherwise as to the correctness of each of the statements contained in these particulars. The vendor does not make or give, and neither Whitman & Co. or any person in their employment has any authority to make or give, any representation or warranty whatever in relation to the property.